



## CHRISTIAN AID (UK) NIGERIA

FACTSHEET

JANUARY – DECEMBER 2021

### REACH



Direct Reach  
74,029



Indirect Reach  
8,006,119



Male  
32,498



Female  
49,594

Persons Living With Disabilities



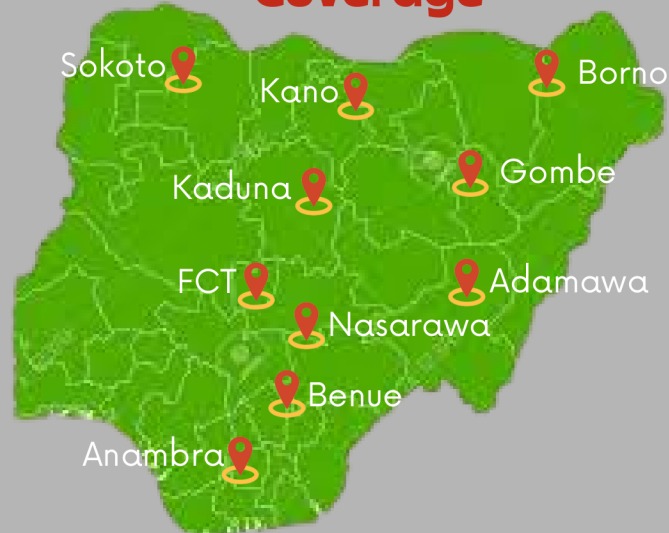
998

### Budget



5,133,268

### Coverage



12 Partners



13 Projects



4 Geo-Political Zones

### Intervention Areas



Capacity Building

55 semi-literate people trained as Community Health Agents to facilitate the enrolment of community members into the State Health insurance scheme.

Climate Action



60,000 tree seedlings transplanted to houses and public spaces



Livelihood Support

1,794 Households supported with livelihood and economic activities

Food & Nutrition



32,678 persons provided with In-kind food totalling 5,329.327MT



System Strengthening

9 school clubs and 9 structures set up at state and community levels to prepare for and manage emergencies or disasters.

Health Coverage



890 vulnerable and marginalized persons enrolled into state insurance



#StandingTogether





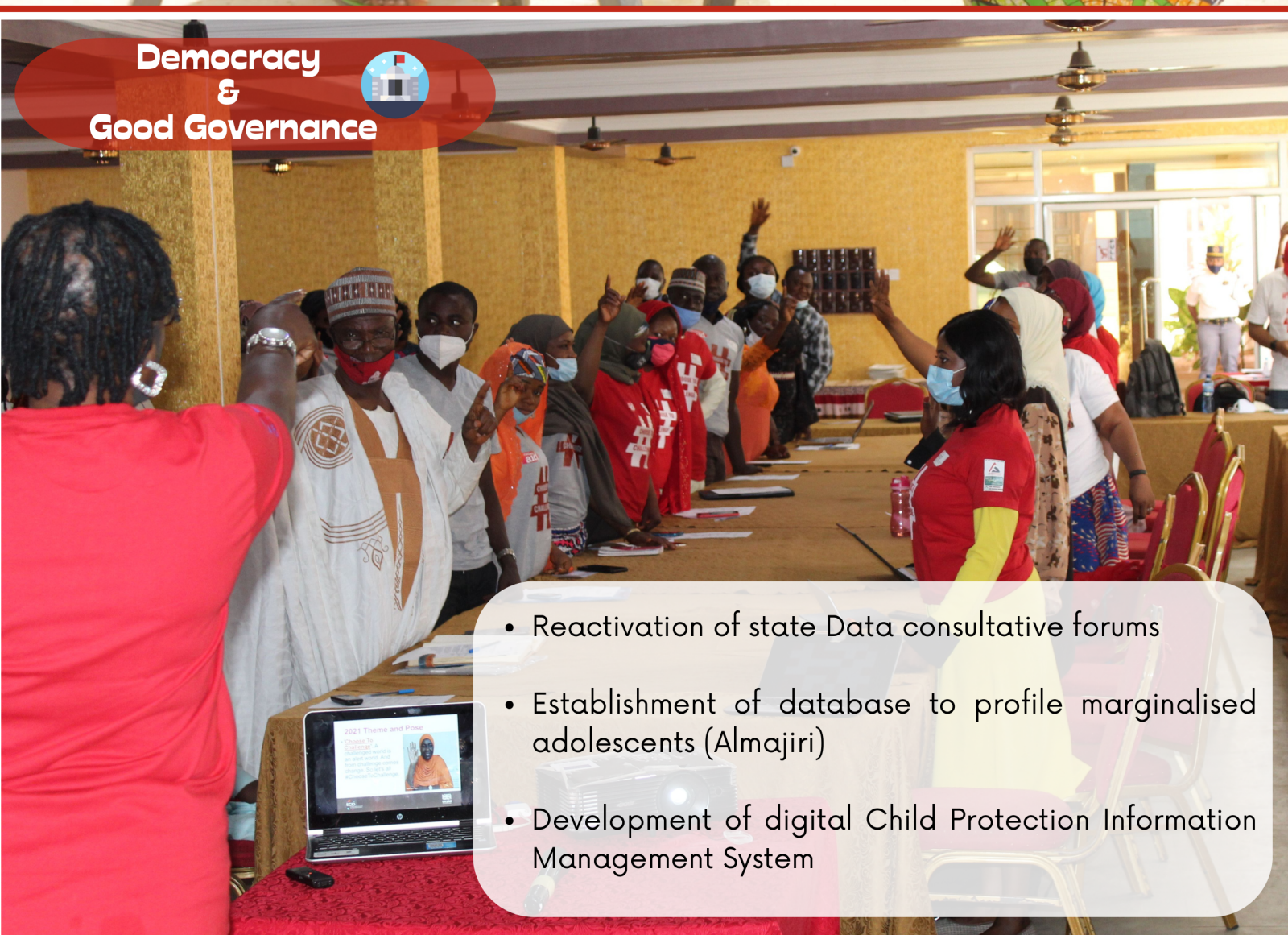
## Humanitarian, Sustainable Livelihood & Resilience

- 32, 678 persons provided with In-kind food
- 1,158 and 1,675 pregnant and lactating women, and children respectively received extra nutritional supplements
- 1,639 households supported with livelihood activities and monthly conditional cash transfer
- 155 Households' economy strengthened
- 60,000 tree seedlings were transplanted by 1,639 households.



## Health & Human Development

- 55 semi-literate community members trained as Community Health Agents
- 890 vulnerable and marginalized persons identified, adopted and enrolled into State Health Insurance Scheme
- 16 individuals directly enrolled by trained community groups into the State Health Insurance Scheme.



## Democracy & Good Governance



- Reactivation of state Data consultative forums
- Establishment of database to profile marginalised adolescents (Almajiri)
- Development of digital Child Protection Information Management System



Plot 802, Ebitu Ukiwe Street,  
Opposite Nigeria Centre for  
Disease Control, Jabi District,  
FCT, Abuja



[christianaid.org.uk/nigeria](http://christianaid.org.uk/nigeria)



@ChristianAidinNigeria



@CAID\_Nigeria